



**STATE OF VERMONT**  
OFFICE OF LEGISLATIVE COUNCIL

**Witness Information**

**Handouts**

Please make sure to put a title, date, and your name on the top of each document submitted for testimony.

Copies of handouts must be emailed to Sue MacMartin at [smacmartin@leg.state.vt.us](mailto:smacmartin@leg.state.vt.us) at least 24 hours before your scheduled time. In addition, please also bring five hard copies of your handout.

If you want copies made at the State House, there is a charge of \$.10 per printed side. State employees can use transfer numbers to pay for copies made at the State House. Any document you hand out to the committees is by law available to the public.

**ATTENTION- With few exceptions, any documents you hand out to a committee, or send to a committee assistant, are open to the public. Public documents not subject to copyright restrictions will be posted to the committee's webpage.**

The committee's information page is available at this url:  
<http://www.leg.state.vt.us/committees>

The agenda for committees is updated continually. You can check the agenda at:  
<http://www.leg.state.vt.us>

**Equipment**

If you require any special equipment or resources for your testimony, please notify the committee assistant as soon as possible so that arrangements can be made.

**Phone testimony**

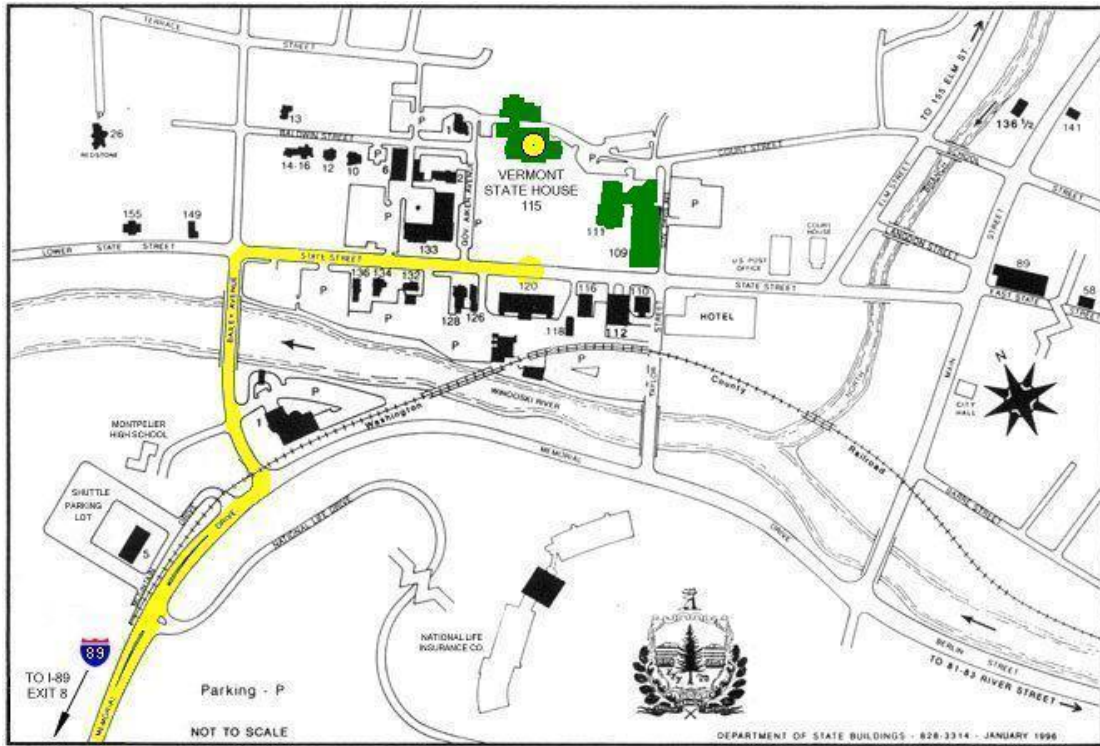
If you have been approved to testify by phone, please provide the committee assistant with a working phone number at least 24 hours before your scheduled testimony time. The committee assistant will test this phone number to ensure connectivity. The committee will call you when ready.

**Driving Directions**

The Senate Health and Welfare Committee is located in Room 17 of the State House.

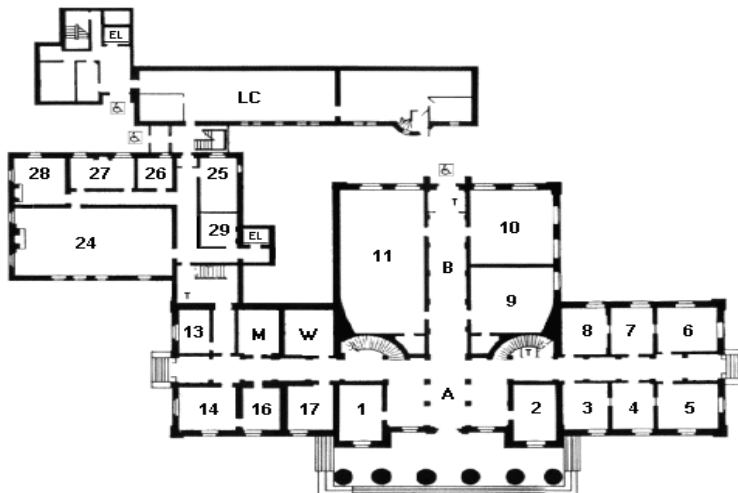
115 State Street  
Montpelier, VT 05641

|                   |  |           |
|-------------------|--|-----------|
| <b>From I-89:</b> | Take EXIT 8 toward US-2/MONTPELIER/ VT-12/ST. JOHNSBURY. | 0.5 miles |
| 1:                | Merge onto MEMORIAL DR.                                  | 0.7 miles |
| 2:                | Turn LEFT onto US-2/BAILEY AVE                           | 0.1 miles |
| 3:                | Turn RIGHT onto STATE ST/US-2 BR/THEODORE ROOSEVELT HWY. | 0.2 miles |
| 4:                | Vermont State House, 115 State Street (on left)          | 0.2 miles |



Parking is challenging during the legislative session. You can park on Montpelier streets for up to 2 hours at parking spaces that require quarters, dimes, or nickels. There is a shuttle that runs from the parking lot in lower left-hand corner of the map above, and also from National Life. The shuttle is free; schedules for the two routes are available online: [http://gmtaride.org/wordpress/wp-content/uploads/capitalshuttle\\_october.pdf](http://gmtaride.org/wordpress/wp-content/uploads/capitalshuttle_october.pdf)

## Floor 1 (Entrance Floor)



### ROOM

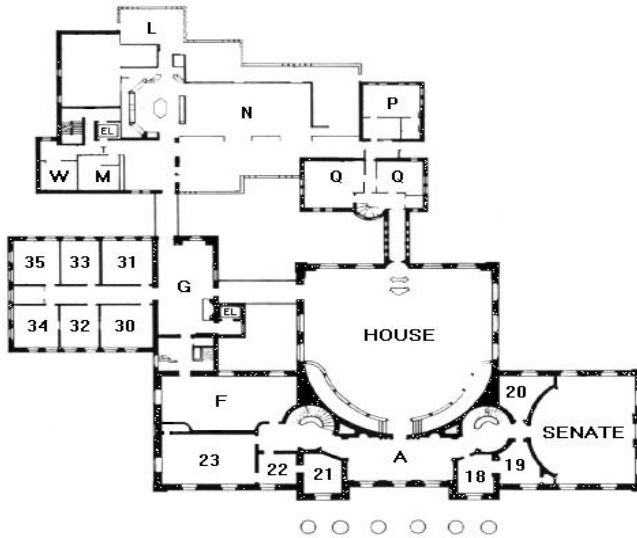
### KEY

|     |   |
|-----|---|
| 1   | Senate Judiciary Committee                                |
| 2   | Sergeant-At-Arms  |
| 3   | Senate Transportation Committee                           |
| 4   | Senate Government Operations Committee                    |
| 5   | Senate Appropriations Committee                           |
| 6   | Senate Finance Committee                                  |
| 7   | Senate Institutions Committee                             |
| 8   | Senate Natural Resources and Energy Committee             |
| 9   | Coatroom  |
| 10  | Small Hearing Room  |
| 11  | Large Hearing Room  |
| 13  | President <i>Pro Tempore</i> of the Senate                |
| 14  | Lt. Governor (President of the Senate)                    |
| 16  | Lt. Governor's Staff                                      |
| 17  | Senate Health and Welfare Committee                       |
| 24  | Legislative Lounge (Old Supreme Court Chamber)            |
| 25  | Copy Center   |
| 26  | Senate Agriculture Committee                              |
| 27  | Senate Economic Development, Housing, and General Affairs |
| 28  | Senate Education Committee                                |
| 29  | Capitol Police  |
| A   | Lobby   |
| B   | Hall of Inscriptions (Lincoln Statue)                     |
| LC  | Legislative Council                                       |
| T   | Public Telephones   |
| M&W | Rest Rooms  |
| EL  | Elevator  |



Accessible Entrances

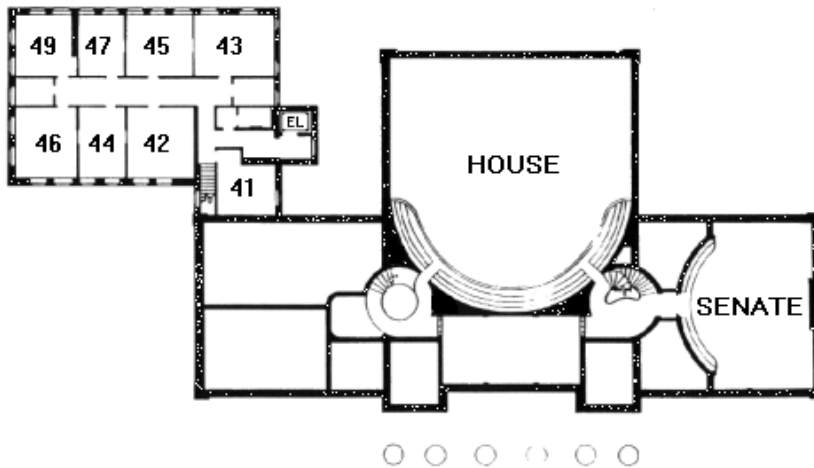
## Floor 2



| <b>ROOM</b> | <b>KEY</b>  |
|-------------|---|
| HOUSE       | House Chamber                                     |
| SENATE      | Senate Chamber                                    |
| 18          | Secretary of the Senate                           |
| 19          | Secretary of the Senate                           |
| 20          | Senate Coatroom                                   |
| 21          | Governor's Staff                                  |
| 22          | Governor's Staff                                  |
| 23          | Governor's Office                                 |
| 30          | House Judiciary Committee                         |
| 31          | House Agriculture and Forest Products Committee   |
| 32          | House Education Committee                         |
| 33          | House Corrections and Institutions Committee      |
| 34          | House Ways and Means Committee                    |
| 35          | House Commerce and Economic Development Committee |
| A           | House Vestibule (Hall of the Flags)               |
| F           | Cedar Creek Room                                  |
| L           | Ethan Allen Room                                  |
| N           | State House Food Court (Abbey Group)              |
| P           | Speaker of the House                              |
| Q           | Clerk of the House                                |
| T           | Public Telephones                                 |
| M&W         | Rest Rooms  |

EL Elevator

## Floor 3



### ROOM

### KEY

|        |   |
|--------|---|
| 41     | House General, Housing and Military Affairs Committee |
| 42     | House Appropriations Committee                        |
| 43     | House Transportation Committee                        |
| 44     | House Natural Resources and Energy Committee          |
| 45     | House Health Care Committee                           |
| 46     | House Human Services Committee                        |
| 47     | House Fish, Wildlife, and Water Resources Committee   |
| 49     | House Government Operations Committee                 |
| HOUSE  | House Chamber Balcony                                 |
| SENATE | Senate Chamber Balcony                                |
| EL     | Elevator  |

There is a coat room near the Sergeant-At-Arms Office in the center of the main floor. You can store outerwear there.

Occasionally we must cancel hearings. We will attempt to notify you as soon as we hear of cancellations or postponements.

If the weather is bad, you can testify by phone rather than chance dangerous driving conditions.

If you have further questions, please contact Agatha at [akessler@leg.state.vt.us](mailto:akessler@leg.state.vt.us), (802)828-2271.